



SHILPA

2, 3 & 4 BHK  
IMPECCABLE HOMES

 7722076767

SWOJAS

ICON estd 1980

BEHARAY GROUP SINCE 1978

SWOJAS ENTERPRISES

SHILPA SOCIETY

MAHARERA NO. P52100053236





SHILPA SOCIETY

# AMENITIES & SPECIFICATIONS

- Impressive Entrance Lobby.
- Stylish sliding Entrance Gates with security cabin.
- Designer Main Entrance Lobby and Floor Lobbies in the building.
- Access Control Entry System with Video Door Phone.
- Double Coat Sand Face External Plaster.
- Stretcher Size Elevator of reputed make like Kone /Schindler etc.
- Battery Back-up for Elevator, Common Lights and Water Pump,
- Mechanical Parking.
- Solar Water System in One Toilet.
- Sufficient L.E.D. lights for Common Area and around the Building.
- Video Door Phone with Access Control.
- Rain Water Harvesting for Conservation of Water.
- Water Level Control System with Standby Pump.
- Borewell (if available) for Additional Water Supply for Common Use.
- Firefighting System for Building as per PMC NORMS.
- Intercom System from Flat to Flat and Security to Flat.

## TILING WORK :

- Vitrified Tiles for Entire Apartment.
- Designer Dado Tiles in Toilets.
- Anti - skid flooring in all toilets.
- Granite Kitchen Platform.
- Designer Dado Tiles above Kitchen Platform.
- All Toilet Door Frames in Granite.
- All Window Frames and Sills in Granite.
- Anti- skid designer flooring for attached Balconies/Terraces.

## WINDOWS :

- UPVC / Euro Section Sliding Windows with Plain Glass and Mosquito Net.
- Terrace / Balcony Adjoining Living Room will have Sliding Door.
- MS Safety Grills for all Windows

## PAINTING:

- Plastic Paint for Entire Apartment.
- Oil Paint for All Window Grills
- Apex Paint for External Surface.

## ELECTRICAL :

- Individual Parking Slot. Will explore options to be provided for Electric Cabling Point necessary for Electric Vehicle Charging in Mechanical parking system.
- Concealed Copper Wiring for Entire Apartment.
- TV Points in Living and all Bedrooms.
- A.C. Points in Living and all Bed Rooms.
- Adequate Light Points for Entire Apartment.
- Provision of Exhaust Fan Points in Kitchen and All Toilets.
- Designer Modular Switches.
- Three phase Electric supply for each Apartment.
- Power Distribution Boards with MCBS and ELCB.

## PLUMBING / SANITARY :

- Concealed Plumbing.
- Hot and Cold Divertor in All Toilets.
- Wall Hung Commodes of Reputed make like aquar / Duravit.
- Designer C.P. Fittings in All Toilets.
- Basin in All Toilets
- Water Purifier provision in Kitchen.
- Kitchen Platform with S.S. Sink.

## DOORS & FITTINGS:

- All door frames in Plywood and Marine Door Shutters with Attractive Brass SS fittings and both side Designer Laminate.

# FLOOR PLANS

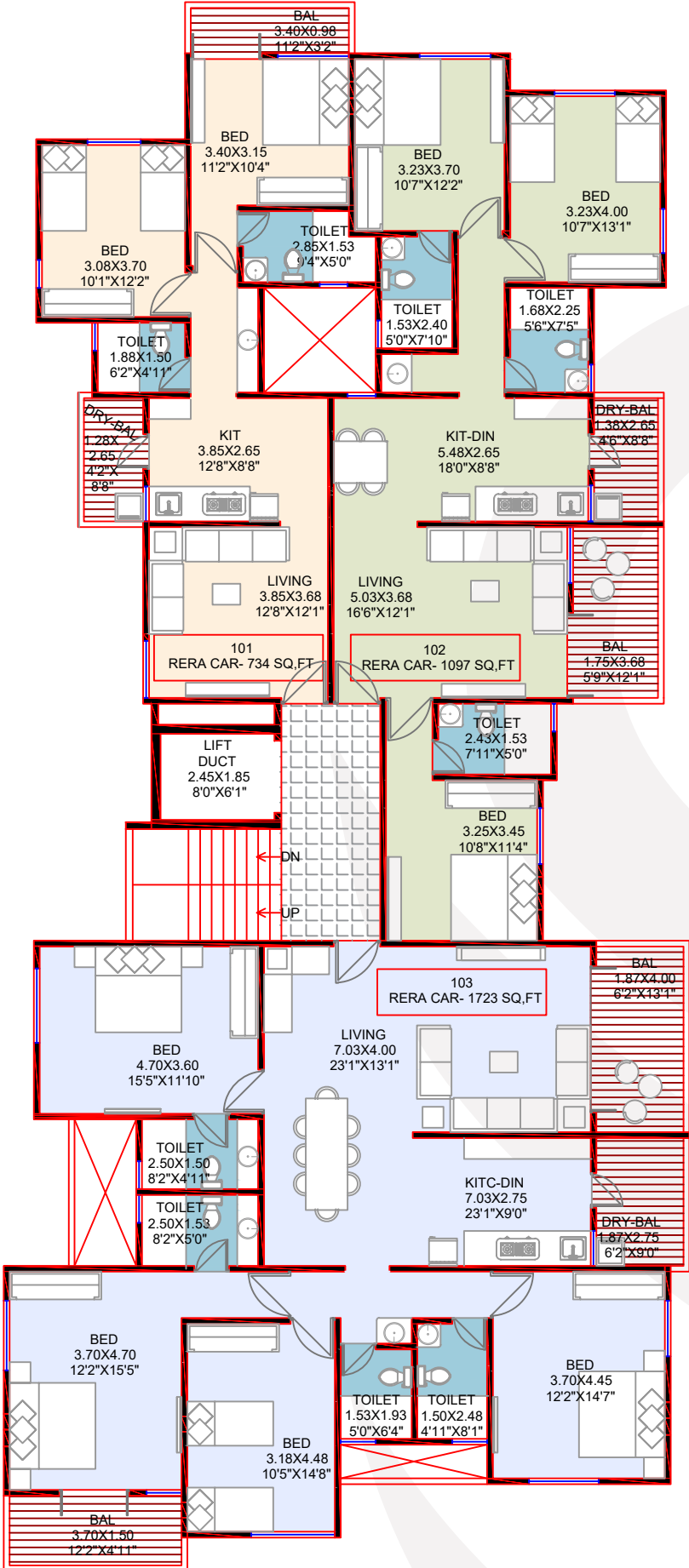


RERA CARPET AREA

FLAT NO.	CARPET SQ.MT.	SQ.FT.	BALCONY SQ.MT.	SQ.FT.	TOTAL SQ.MT.	SQ.FT.
103	141.7	1525	18.44	198	160.14	1724



FIRST FLOOR PLAN

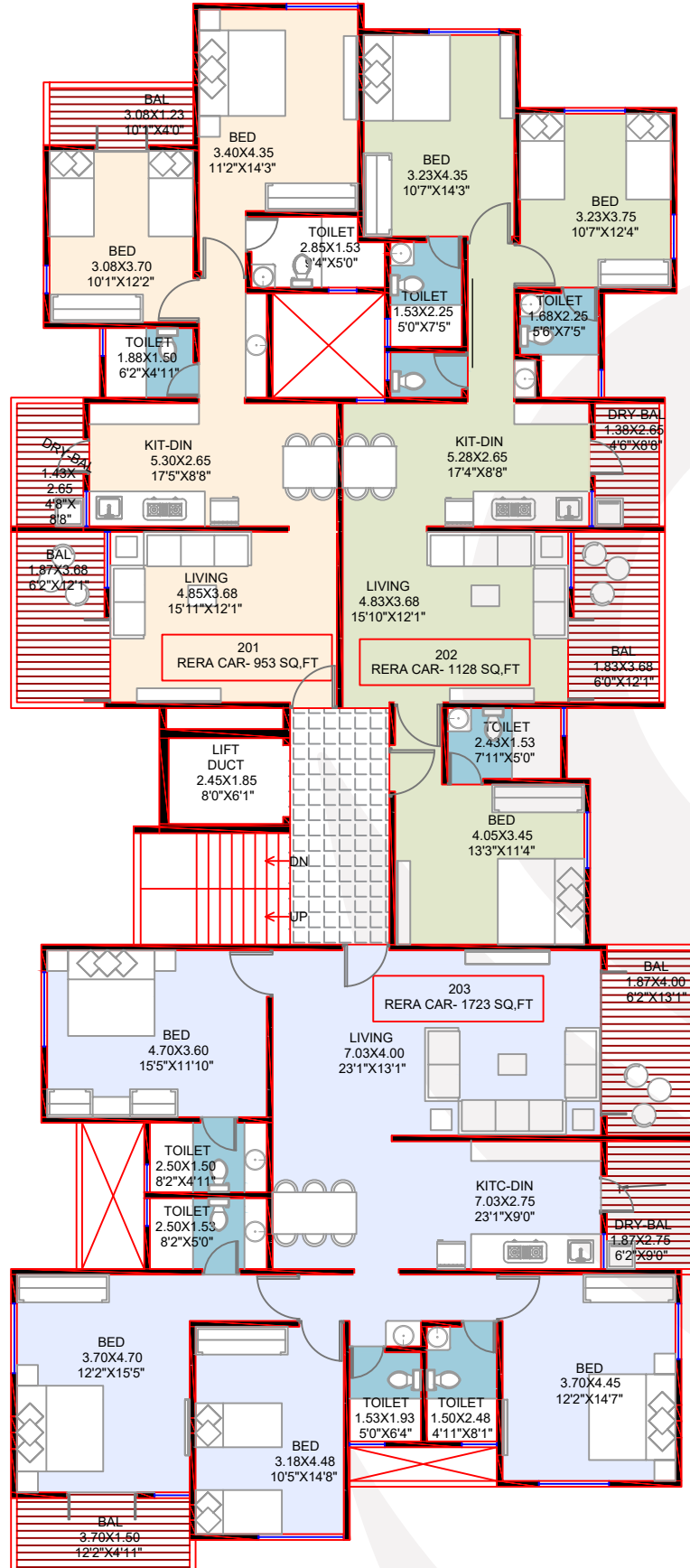


RERA CARPET AREA

FLAT NO.	CARPET SQ.MT.	SQ.FT.	BALCONY SQ.MT.	SQ.FT.	TOTAL SQ.MT.	SQ.FT.
201	73.94	796	14.61	157	88.55	953

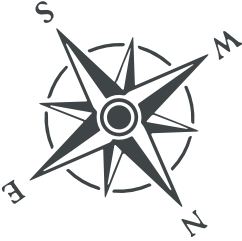


SECOND FLOOR PLAN

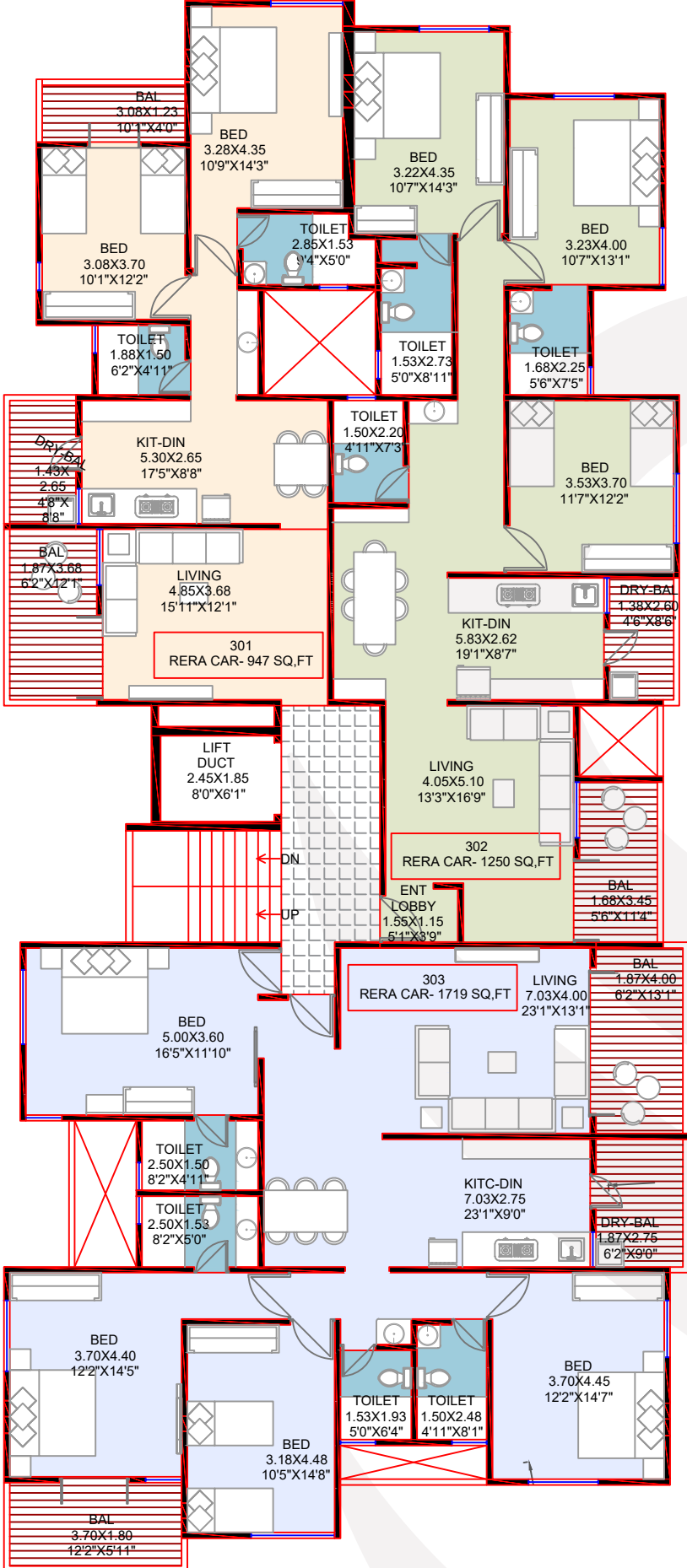


RERA CARPET AREA

FLAT NO.	CARPET		BALCONY		TOTAL	
	SQ.MT.	SQ.FT.	SQ.MT.	SQ.FT.	SQ.MT.	SQ.FT.
301	73.38	790	14.61	157	87.99	947



THIRD FLOOR PLAN

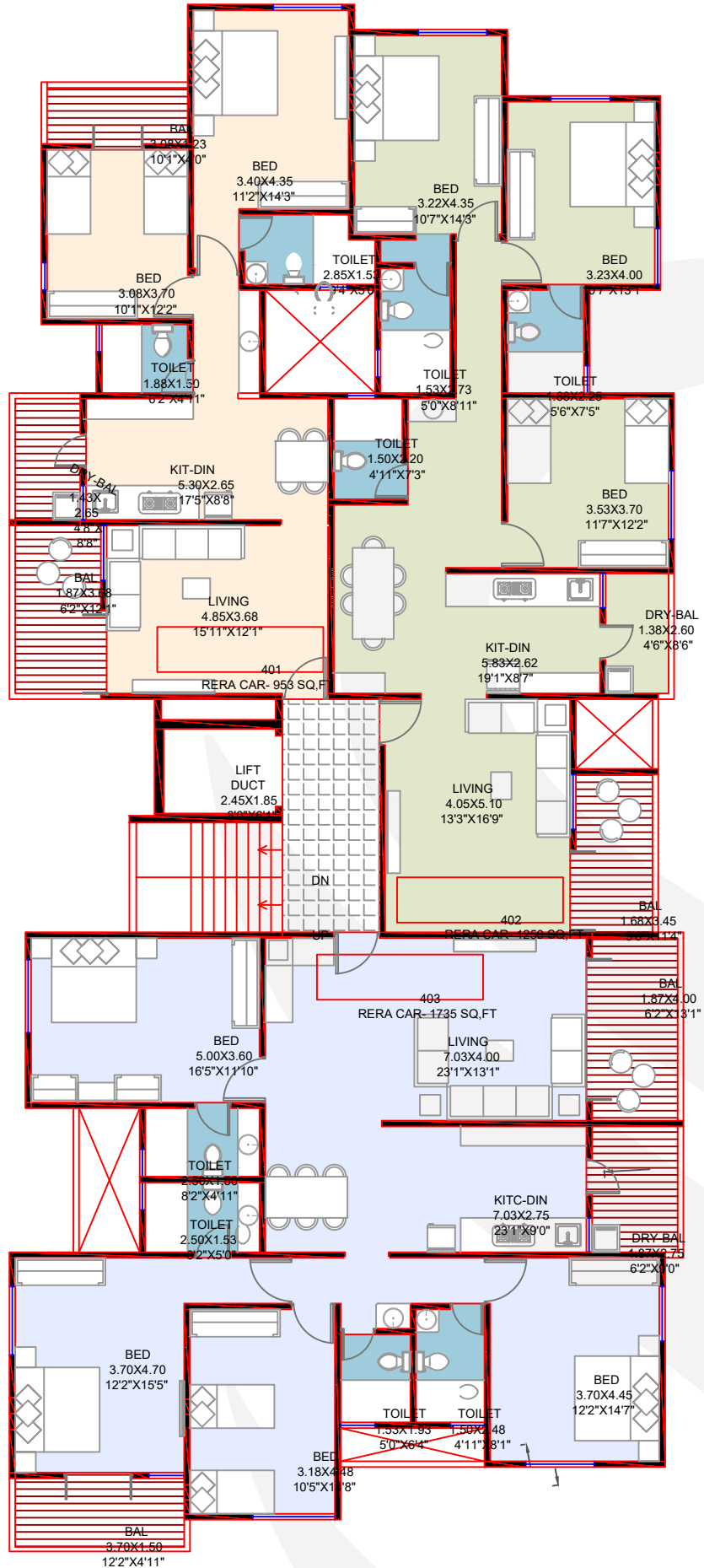


RERA CARPET AREA

FLAT NO.	CARPET	SQ.FT.	BALCONY	SQ.FT.	TOTAL	SQ.FT.
401	73.94	796	14.61	157	88.55	953
402	106.82	1150	9.39	101	116.21	1251



FOURTH FLOOR PLAN



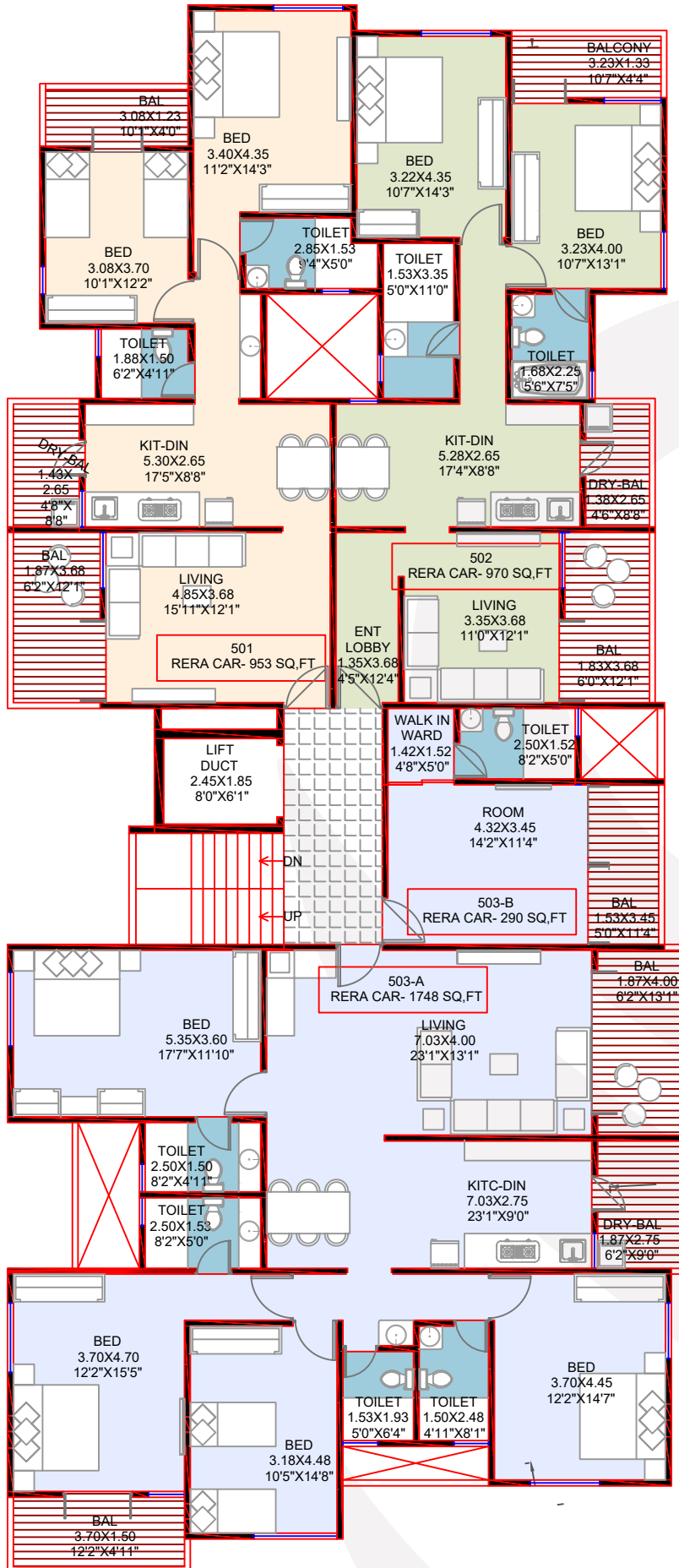


RERA CARPET AREA

FLAT NO.	CARPET	SQ.FT.	BALCONY	SQ.FT.	TOTAL	SQ.FT.
501	73.94	796	14.61	157	88.55	953



FIFTH FLOOR PLAN

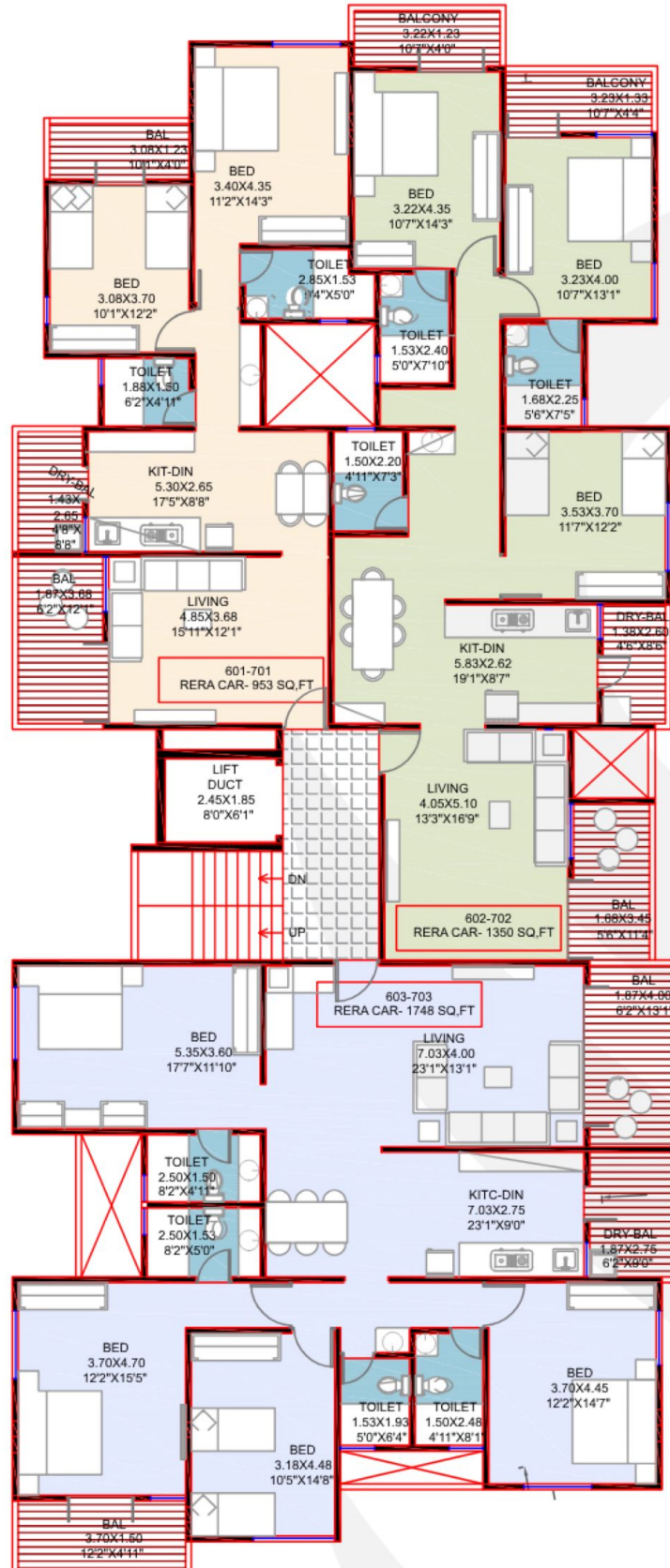


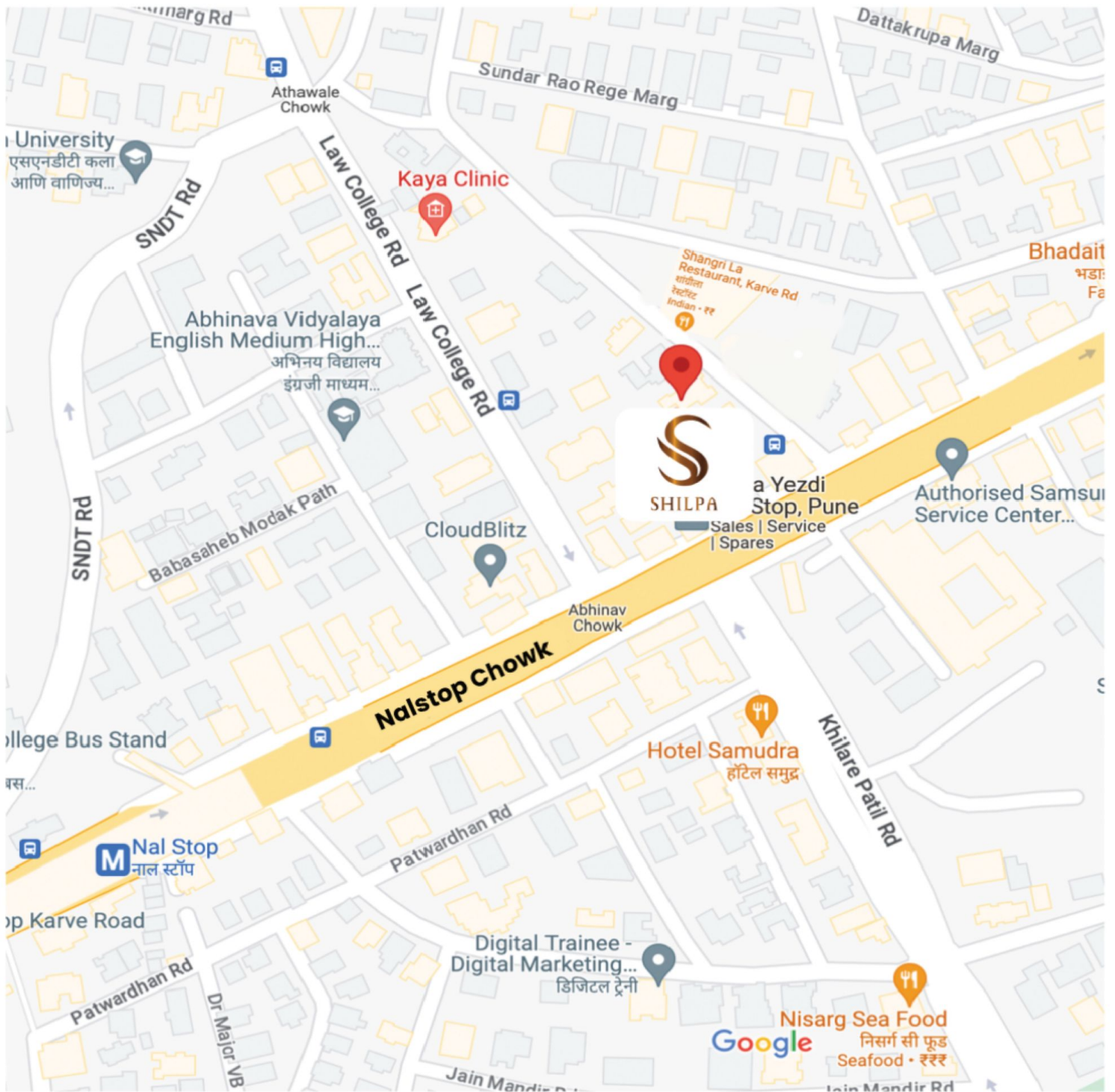
RERA CARPET AREA



FLAT NO.	CARPET SQ.MT.	SQ.FT.	BALCONY SQ.MT.	SQ.FT.	TOTAL SQ.MT.	SQ.FT.
601	73.94	796	14.61	157	88.55	953
603	144.06	1551	18.42	198	162.48	1749
701	73.94	796	14.61	157	88.55	953
702	107.82	1160	17.61	190	125.43	1749
703	144.06	1551	18.42	198	162.48	1749

SIXTH & SEVENTH FLOOR PLAN





Shilpa Apartments 43/15, Shankarrao Kirloskar Marg, Diagonally opposite to Hotel Shangri -La, Apex Colony, Erandwane, Pune 41 1004



7387770273 | 7722076767

MAHARERA NO.  
P52100053236



SHILPA



SHILPA SOCIETY

Venture By

